

Redefining Personal Computing:

Applications of the Raspberry Pi

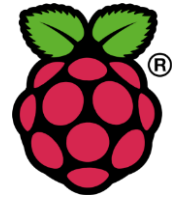
Gabe Przygoda



Image via thetechblock.com

Topics

- What is the Raspberry Pi?
- How can it be used?
- How can I get started?



The Raspberry Pi

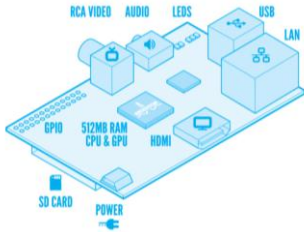


Image via twygh.com

- Credit card sized computer
- Created by Eben Upton and colleagues
- Raspberry Pi Foundation
- Linux based
- \$35 + S&H

Specifications

- Memory: 512MB RAM
- Processor: 700Mhz ARM11 chip
- Graphics: Videocore 4 GPU w/1080p decoding
- Video: HDMI port + RCA video
- Power: 5v via micro USB
- Weight: 45g
- Dimensions: 85.6mm X 56mm X 21 mm



Raspberry Pi Model B
 2 USB ports
 Ethernet
 512MB RAM

Image via Raspberry Pi Foundation

Home Automation

- Send signals via GPIO board
- More powerful than an Arduino Microcontroller



Images via Jake Byrne



Smart TV



Image via Anup Narkhede

- Port XBMC to your Pi
- Raspbmc
- OpenElec
- Raspdex

Energy Efficient Server

- Host your own website
- Personal Cloud
- Low power draw



Image via homecomputerlab.com

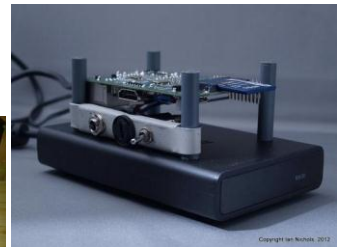


Image via Ian Nichols

Network Attached Storage (NAS)



Image via bestbuy.com

- Raspberry Pi
- Windows Samba
- External Hard drive
- Ethernet connection

Emulation

Image via pi.minecraft.net



Image via parts-people.com



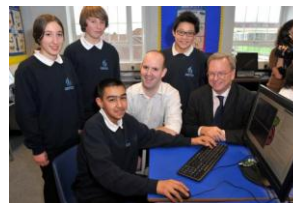
Image via FalconXY

- Portable computing
- Console Emulation
- Retro code

Live Nintendo Music

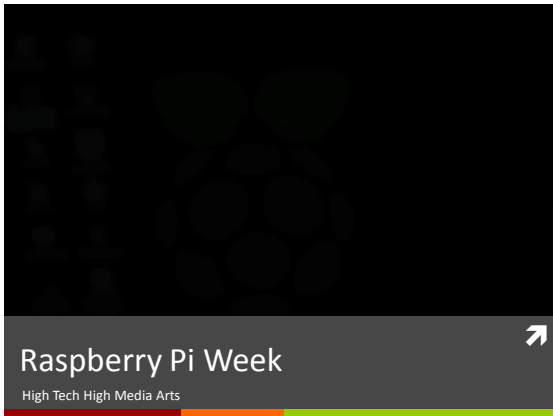
David Thompson

Education



Google Giving donated 15,000 Raspberry Pis to students in the UK. (via raspberrypi.org)

- Coding in the Classroom
- IDLE + Scratch
- Raspberry Pi Model A
 - No Ethernet
 - 1 USB port
 - 256MB RAM
 - \$25 + S&H



Getting Started

- Raspberry Pi Model B
- 4GB SD card (minimum)
- 5v cellphone charger (micro USB)
- Ethernet connection
- USB keyboard/mouse
- Recommended: Powered USB Hub

Write the Linux Image



Image via odrrobot.it

- Download Raspbian “wheezy” image
 - Scaled down version of Debian
 - Free
- Extract ISO file to SD card
 - Example: Win32DiskImager
 - Extensive tutorials for multiple operating systems
- Raspberrypi.org/downloads

Connect the Pi

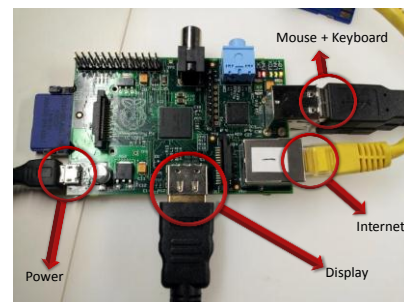


Image via Derk Brookman

Boot and Play



Image via Lifehacker.com

Connect Peripherals



Get Creative



Image via University of Southampton

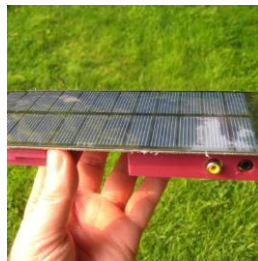


Image via Sean Michael Ragan

The Raspberry Pi Foundation

“We don’t claim to have all the answers. We don’t think that the Raspberry Pi is a fix to all the world’s computing issues; we do believe that we can be a catalyst. We want to see cheap, accessible, programmable computers everywhere; we actively encourage other companies to clone what we’re doing.”

Other Boards



Image via BeagleBoard.org

Beaglebone Black \$45

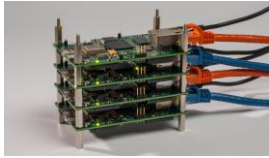


Image via parallella.org

Adapteva's Parallella \$99

Questions?

